



Wall cladding at the airport terminal

When hygienic requirements are more stringent, such as in heavily frequented areas or laboratories, Max Compact Interior Plus panels are your panels of choice: they allow soiling and graffiti to be perfectly removed.

Numerous test series confirm:
Max Compact Interior Plus panels possess outstanding properties in terms of disinfection and hygiene. Even aggressive cleaning substances can do no them no harm. This is thanks to the specially sealed Interior Plus surface, which makes for previously unachieved resistance to environmental influences.

You'll find more detailed information on using Max Compact panels in our "Compact Interior Technique" brochure and on our website at **www.fundermax.at**



Wall cladding in an entrance hall

FunderMax France
3 Cours Albert Thomas
F-69003 Lyon
Tel.: +33 (0) 4 78 68 28 31
Fax: +33 (0) 4 78 85 18 56
infofrance@fundermax.at
www.fundermax.at

FunderMax India Pvt. Ltd.
504, 5th floor, Brigade Towers
135, Brigade Road
IND-560025 Bangalore
Tel.: +91 80 4111 7004
Fax: +91 80 4112 7053
officeindia@fundermax.biz
www.fundermax.at

JAGO AG
Industriestrasse 21
CH-5314 Kleindöttingen
Tel.: +41 (0) 56-268 81 31
Fax: +41 (0) 56-268 81 51
info@jago.ch
www.jago.ch

ISOVOLTA S.A.U
Avda. Salvatella, 85-97
Polígono Industrial Can Salvatella
E-08210 Barberà del Vallès (Barcelona)
Tel.: +34-937 297 550
Fax: +34-937 190 511
info@isovolta.es
www.isovolta.es

ISO-MAX Spółka Akcyjna
ul. Rybitwy 12
PL-30722 Krakau
Tel.: +48-12-65 34 528
Fax: +48-12-65 70 545
biuro@iso-max.com.pl
www.iso-max.com.pl



FunderMax GmbH
Klagenfurter Straße 87-89
A-9300 St. Veit/Glan
Tel.: +43 (0) 5/9494-0
Fax: +43 (0) 5/9494-4200
office@fundermax.at
www.fundermax.at

Ein Unternehmen der *Constantia* INDUSTRIES AG

5-6/10-1227806GB.18



Wall Cladding

Max Compact
Max Compact IP
Max Alucompact06
Max Alucompact06 IP

interior

for
people
who
create

Wall cladding with Max Compact

The outstanding properties of Max Compact Laminates, made according to EN 438-4, make them very well suited for permanent wall covering solutions that have to withstand impacts and other kinds of rough treatment that can occur in everyday situations where they are installed. Particularly in busy buildings, it would be near-unthinkable not to have such panels on the walls as impact protection. Max Compact Laminates are unimpressed even by years of service — they just keep looking like new.

FunderMax offers the right solution for every application — especially in terms of wall protection.

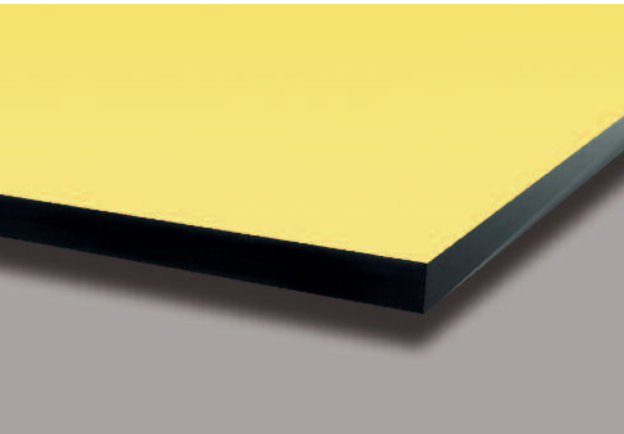
Max Compact Interior with the black core is your product of choice for classic ventilated wall panelling.

Back-ventilation guarantees the equalization of temperature and humidity, particularly when moisture from the construction phase is still present in the walls or when there are climatic differences between adjacent rooms.

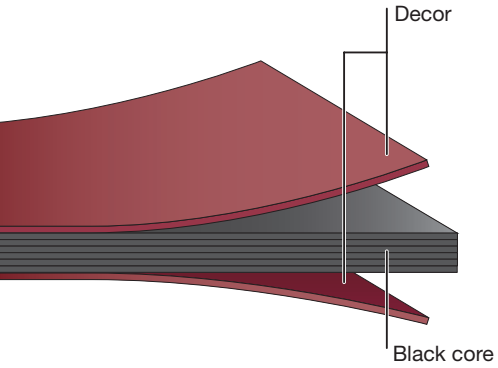
Max Compact Laminates are also available in F-quality.

Areas of application

- _ wall protection
- _ impact protection
- _ wall cladding (ceiling high)
- _ pillar cladding



Max Compact Interior with black core



Structure of Max Compact Interior with black core



wall cladding in an airport building



wall cladding in a rehab hospital

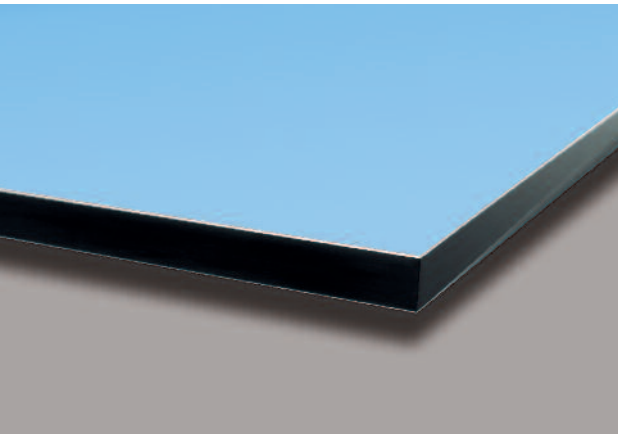
Wall cladding with Max Alucompact06



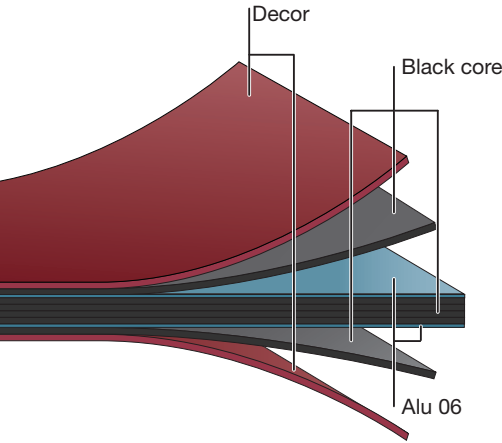
For cases in which ventilation is either impossible or undesired — due to hygienic requirements, for example — the special structure of Max Alucompact06 allows construction without ventilation. Even so, a sub-construction remains necessary.

Sealing on all sides makes possible a wall cladding that complies with hygienic requirements and remains easy to clean and maintain.

Max Alucompact06 panels are also available in F-quality. Max Alucompact06 is not available in custom decor (Individualdekor).



Max Alucompact06 with black core



Structure of Max Alucompact06 with black core

Classic areas of use

- _ schools and public buildings
- _ airports, train stations

Applications with strict hygienic requirements

- _ hospitals, nursing homes, operation theatres
- _ foods industry
- _ laboratories (medical)
- _ care facilities



Wall cladding in an university hospital

Decorative and individual



Wall cladding in an entrance hall

Productadvantages of Max Compact Laminates

- _ robust
- _ impact-resistant
- _ shock-resistant
- _ durable
- _ easy to clean
- _ completely disinfectable
- _ sustainable
- _ decorative
- _ in F-quality upon request



Wall cladding in a research center