

## Projects

# exterior





## Table of Contents

<b>04</b>	Quality
<b>06</b>	Façades
<b>26</b>	Lap Siding
<b>30</b>	Individualdecor
<b>34</b>	Balconies
<b>44</b>	Entrances
<b>46</b>	Fascia/Soffit
<b>48</b>	Soffit
<b>50</b>	Balcony/Partitions
<b>52</b>	Sun Protection
<b>54</b>	Railings
<b>56</b>	Lettering
<b>58</b>	Transportation
<b>60</b>	Utilitarian Structures
<b>62</b>	Outdoors
<b>64</b>	Playground
<b>66</b>	Sports Facilities



# for people who create

Architecture is first and foremost a product of the mind. At the beginning there exists an idea. Only then do images mature, and this process gives rise to questions. What is doable? Does form follow function? What colours and materials speak the right language? And to what extent should creativity in and of itself be a standard? However your idea takes form – FunderMax exterior opens up to you an innovative world of products that allows you to realize your ideas in strong, high-impact forms.

Max Exterior panels are duromer high-pressure laminates (HPL) in accordance with EN 438-6 Type EDF that are produced in lamination presses under great pressure and high temperature. Double-hardened acrylic PUR resins provide extremely effective weather protection that is particularly suitable for long-lasting balconies and façade claddings.



Scratch resistant



Easy to clean



Solvent resistant



Easy to install



Extremely weather resistant



Optimal light-fastness



Impact resistant



Double hardened

## Properties:

- \_\_ Extremely weather resistant
- \_\_ Optimal light-fastness
- \_\_ Double hardened
- \_\_ Scratch resistant
- \_\_ Solvent resistant

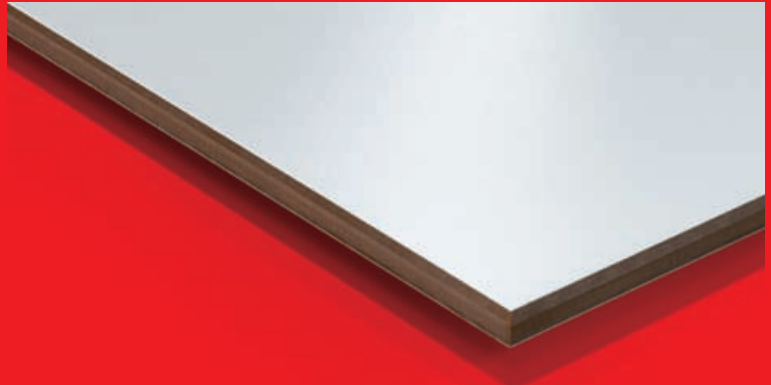
- \_\_ Easy to clean
- \_\_ Impact resistant
- \_\_ Suitable for all exterior applications
- \_\_ Decorative

- \_\_ Self-supporting
- \_\_ Bending resistant
- \_\_ Frost resistant
- \_\_ Heat resistant
- \_\_ Easy to install



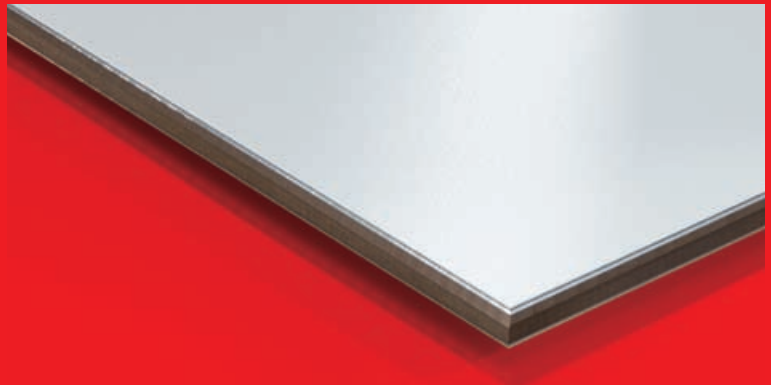
## Max Exterior F-Quality

As a standard, Max Exterior panels come printed on both sides. The core is flame-retardant and the surface is light-fast. Thanks to the double-hardened resin, it is also extremely weather resistant.



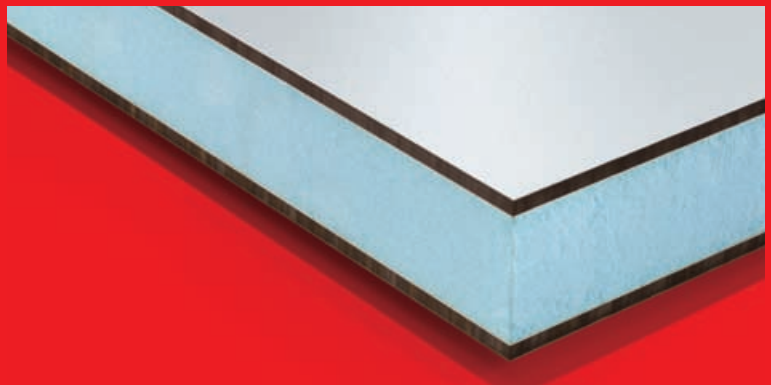
## Max Exterior Alu-Compact 42 F-Quality

The design meets F-Quality standards and is additionally provided on both sides with aluminium bands under the print layer. This ensures that even perforated panels are extremely stable.



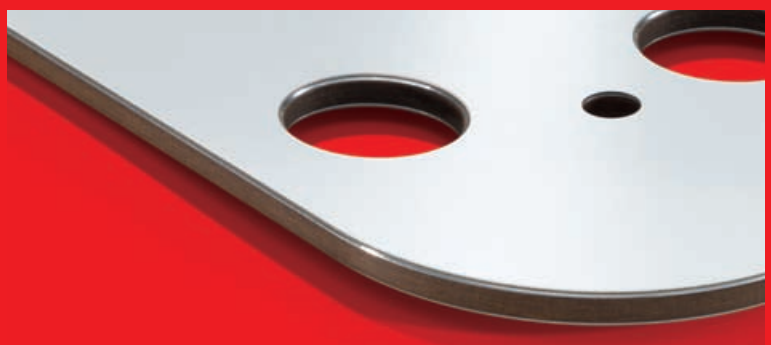
## Sandwich Elements

The Max Exterior panels in F-Quality also come polished on just one side for use in sandwich elements.



## Processing

FunderMax offers CNC controlled processing and panel cutting. With state-of-the-art devices, it is possible to produce everything: from simple cutouts for mounting the facade panels, to intricate milling for balcony and fence elements. We can make just about anything you can dream up.



The applications shown are projects which were realised using Max Exterior. When planning and realising your own projects, please note that your local building regulations may require solutions which differ in some details.

# Façades

**Project** \_ Bieler Business Center  
**Country** \_ Switzerland  
**Design** \_ Werkhof Architekten AG, Biel

**Decor No.** \_\_0160 NT Dark Afro

The freedom of ideas.  
Max Exterior panels offer an exceptionally high degree of design freedom and can be excellently combined with other materials. This makes possible things like strong structuring of facades with aluminium profile elements.





- \_ horizontal arrangement
- \_ warm, harmonious colour tone
- \_ large panel formats
- \_ interesting individual solutions for blinds

exterior

# Façades

**Project** \_\_ Sports complex in Themar

**Country** \_\_ Germany

**Design** \_\_ Hartmann & Helm Planungsgesellschaft mbH, Weimar

**Decor No.** \_\_ 0168 NT Akro Rust







**Classicism and modernism.**

A modern building, an ultramodern material for its façade. And a versatility which makes possible the harmonious connection with historic substance: the panels' staggered arrangement brings together the old and the new in playful contrast.

- \_\_ structuring of large surfaces
- \_\_ diversity of formats thanks to ease of trimming
- \_\_ freedom in design and planning
- \_\_ perfect formation of corners

exterior

# Façades

**Project** \_\_Single-family home Hueber

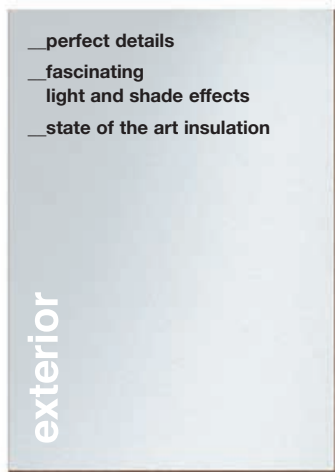
**Country** \_\_Austria

**Design** \_\_Inntakt Architekturbüro Hueber

**Decor No.** \_\_0085 NT White



**A long life.**  
Those who build a single family home frequently also have the next generation in mind. So durability plays an important role in the choice of facades. With Max Exterior, maintenance is something you can forget about for decades to come.









# Façades

**Project** \_\_Office building Ployer + Hörmann

**Country** \_\_Austria

**Design** \_\_Stefan Köglberger, Neuhofen

**Decor No.** \_\_0159 NT Afro Black, 0674 NT Mars Red



**It's all about combination.**

**Max Exterior panels make possible any combination of colours, decors and mounting methods. Like robust red accents on a façade done in white and grey. The staggered arrangement of the panels provides additional texture.**

- \_\_very dark colours possible
- \_\_in-factory trimming for swift, economical construction
- \_\_more structuring options thanks to mix of materials

exterior







# Façades

**Project** \_Medical nursing center, Tiefwareensee

**Country** \_Germany

**Design** \_Heske Hochgürtel Lohse/Architekten und Ingenieure

**Decor No.** \_0662 NT Jade Green,  
0687 NT Maize, 0085 NT White



**Subtle mood-setters.**

In the autumn of life, harmony should take centre-stage. While pastel colours on the outside radiate cheerful calm, the shimmering red wood-tone on the inside brings warmth to the complex.





# Façades

Project \_Alge Wohlfurt

Country \_Austria

Design \_Architekt Bernd Spiegel, Dornbirn

Decor No. \_\_0161 NT Light Afro





**Go in-depth.**

**Max Exterior offers a multitude of ways in which to sculpt a façade. Particularly attractive is the accentuation of a building's individual sections, playing with light and shade, forms and colours.**

**Project**\_\_WG Süd Vögenteichplatz, Rostock

**Country**\_\_Germany

**Design**\_\_Architekturbüro Teichmann, Rostock

**Decor No.**\_\_0703 NT Dove Blue



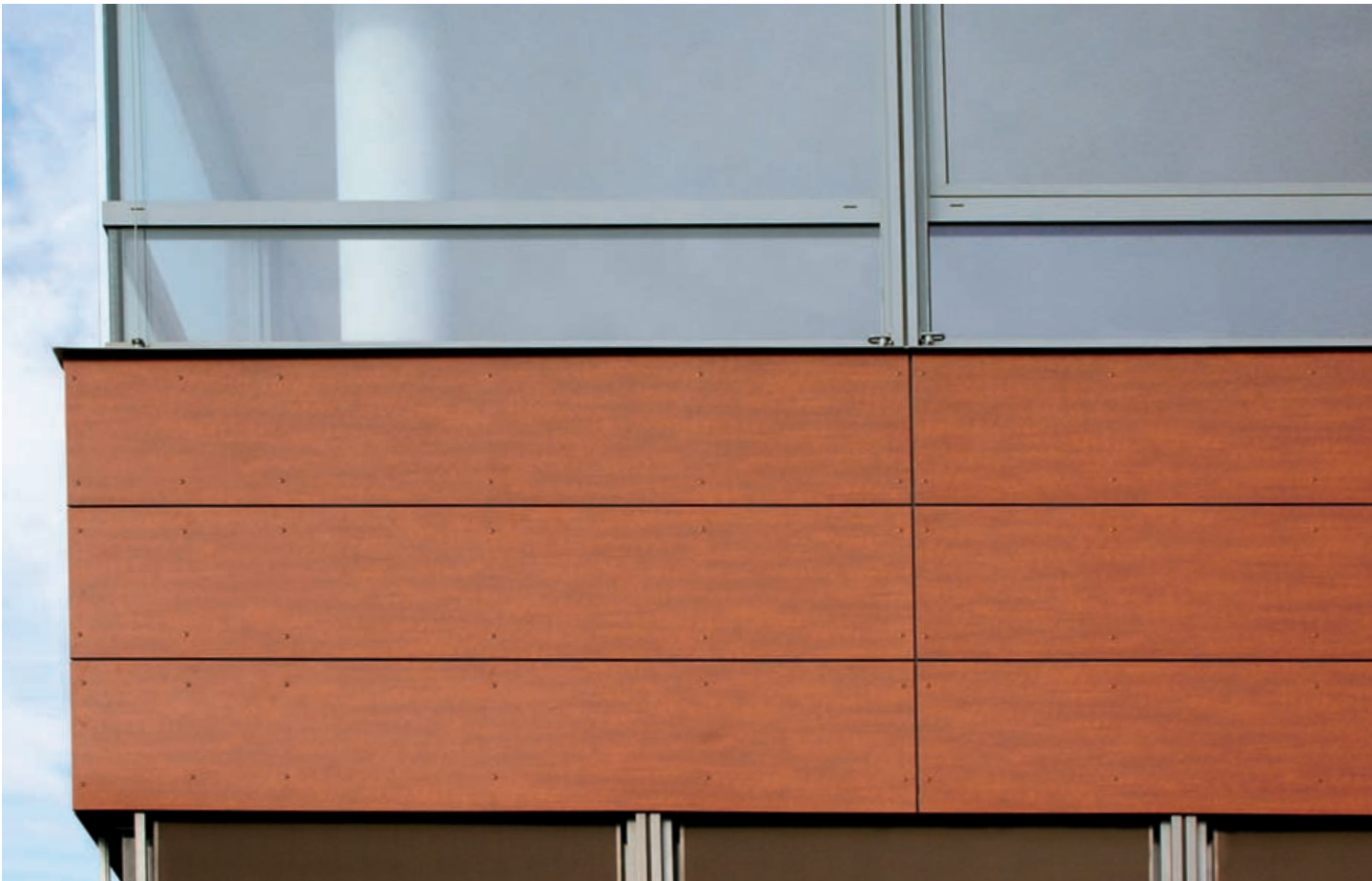
# Façades

**Project** \_Outpatient clinic, Suhl

**Country** \_Germany

**Design** \_Worschech Architektur- und Planungsgesellschaft mbH, Erfurt

**Decor No.** \_0161 NT Light Afro







Calm distinction.  
Horizontally mounted Exterior panels in wood decor give flat facades an interesting, finely textured surface that lends a building value and warmth.



# Façades

**Project** \_\_TGZ Bad Leonfelden  
**Country** \_\_Austria  
**Design** \_\_S & S OEG, Pregarten

**Decor No.** \_\_0272 NT Summerapple, 0325 NT Java Grey




—one unified underconstruction independent of the decor  
—easy adaptation to actual conditions when mounting  
—design freedom thanks to a hung façade with space behind

exterior





A low-angle photograph of a modern building's exterior. The facade is composed of large, rectangular panels in three main colors: light-colored wood, dark grey, and white. A large glass section is visible on the left. The building is set against a clear blue sky with a few wispy clouds. The perspective is looking up at the building, emphasizing its height and geometric forms.

Take off in new directions.  
Breaking through traditions with façade design is in itself exciting.  
A mix of Exterior panels in wood and solid colour decors with other  
materials lends your building an unmistakable appearance.



# Façades

**Project** \_ Fire company Westendorf

**Country** \_ Germany

**Design** \_ Nigg + Kögl Architekten, Fischach

**Decor No.** \_ 0674 NT Mars Red, 0661 NT Terracotta,  
0691 NT Purple, 0689 NT Dark Red, 0680 NT Ruby Red







**Colour follows function.**

Fiery colours taken literally: the façade signals the building's function far and wide. On the inside of the building, the colour concept is continued with FunderMax Interior panels in the same decors.

- a wide range of colours to help loosen up large surfaces
- solid, proven technology thanks to decades of experience in outdoor applications
- matching decors possible for interiors

exterior

# Façades

**Project** \_Bureaux Arborial Montrieul

**Country** \_France

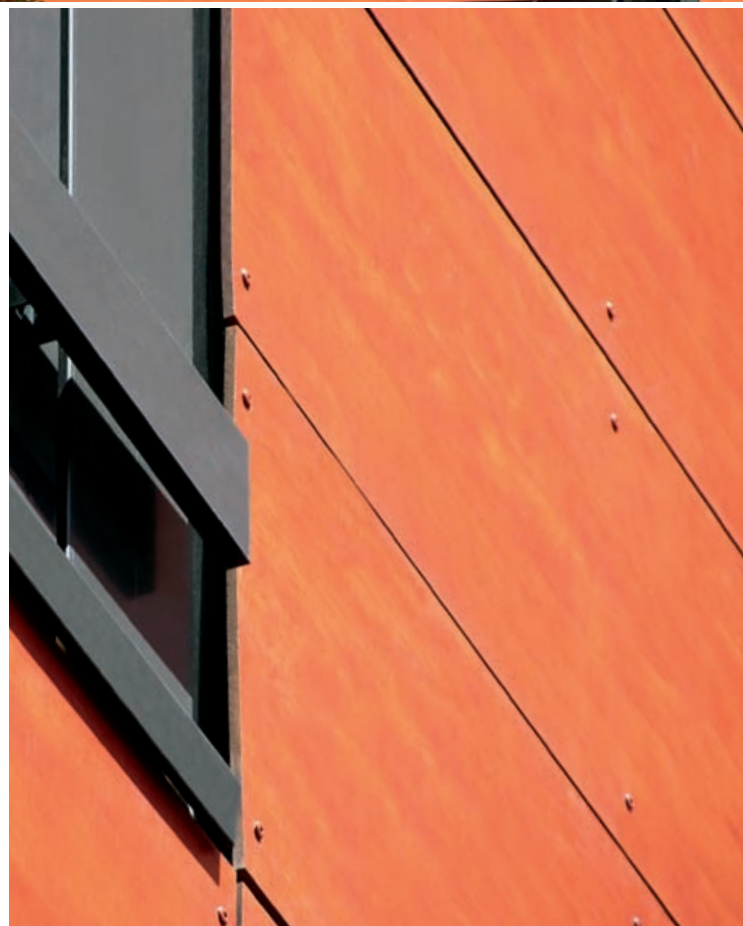
**Design** \_Sexer Loyrett, Gentilly

**Decor No.** \_\_0601 NT Sun Pear



- \_optimum lightfastness even in strongly patterned wood decors
- \_efficient installation thanks to largely uniform size formats
- \_panel division coordinated with window proportions

exterior





A low-angle photograph of a modern building's exterior. The facade is composed of large, rectangular, reddish-brown panels with a horizontal ribbed texture. Several rows of large, dark-framed windows are integrated into the facade, reflecting the sky and surrounding environment. To the right, a taller, more traditional brick building is partially visible. In the foreground, the green foliage of trees is seen at the bottom right corner.

**Defies wind and weather.**  
The high resistance of Max Exterior is ensured by the patented, double-hardened NT surface. It lends the façade panels their distinctive weather-protective qualities




# Lap Siding

**Project** \_Single-family home Klee, Wallberg

**Country** \_Switzerland

**Design** \_Architekt Erich Guggisberg, Bern

**Decor No.** \_\_0077 NT Charcoal



So beautiful, you want to touch it.  
It's particularly in the details that one sees how attractive clapboard surfaces can be. Perfect custom solutions using aluminium profile elements make for a consistently high-quality appearance.





# Lap Siding

**Project**\_\_SPA Hotel Bründl, Bad Leonfelden

**Country**\_\_Austria

**Design**\_\_Team M, Linz

**Decor No.**\_\_0169 NT Akro Ruby

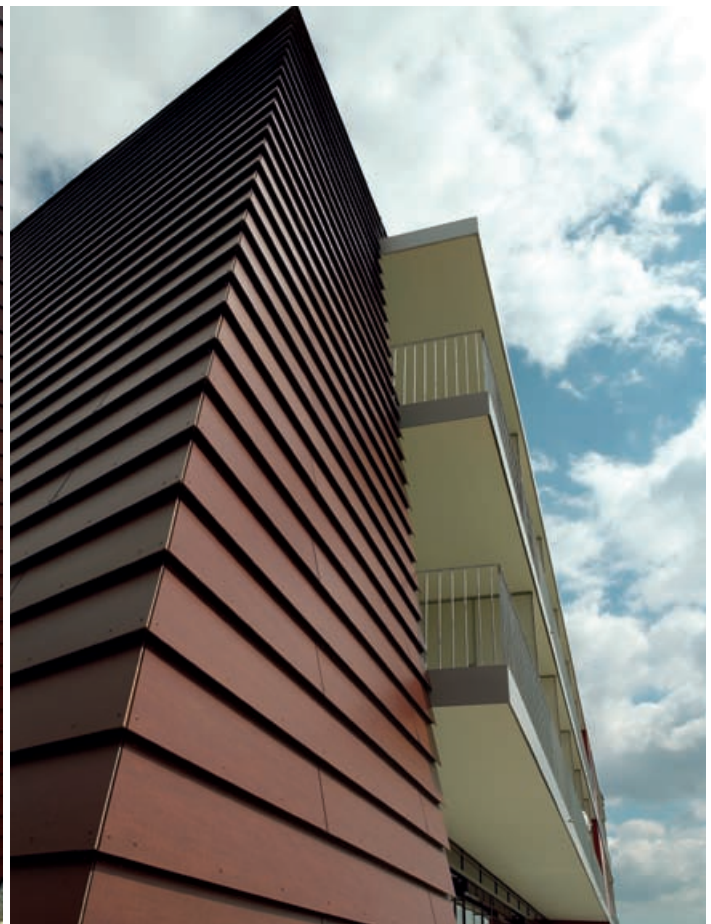


A virtuosic interplay of light and shade.  
Integrating the environment, simultaneous demarcation and openness.  
As a place of hospitality, a hotel should be inviting but also protective.  
The interplay of light and shade makes the building less massive and  
embeds it harmoniously in its rural surroundings

— factory trimming and  
processing to guarantee a  
high degree of precision  
— fast installation via proven  
clapboard system  
— avoidance of heat transfer  
thanks to hung façade with  
space between façade and  
wall

exterior







# Individualdecor

**Project** \_\_Anne-Frank-Gymnasium, Rheinau

**Country** \_\_Germany

**Design** \_\_koopX architekten, Böhning, Schüler, Zalenga

**Decor No.** \_\_Individualdecor

**Facades with symbolic power.**  
The capabilities of digital printing give you the freedom to print Max Exterior panels with any thinkable motif. For this school, macro-photographic images were used in order to symbolize an educational idea: this is a place to go up-close and get to the bottom of things.









# Individualdecor

**Project** \_\_Residential building, Lanserwiese

**Country** \_\_Austria

**Design** \_\_Architekten Wimmer & Zaic

**Decor No.** \_\_Individualdecor



**A healthy solution.**

Max Individualdecor create a friendly atmosphere, and these nature-inspired motifs move the observer to think of the nicer things in life. Since they can go for decades without maintenance, they are also highly economical.

\_\_nature-inspired decors in  
brilliant colours  
\_\_extreme durability and  
scratch-resistance  
\_\_ideal "building biology"  
thanks to back-ventilation  
of façade

exterior



**Project**\_\_Provincial retirement home, Wallsee  
**Country**\_\_Austria  
**Design**\_\_Architekt Lindner, Baden

**Decor No.**\_\_Individualdecor

**FUNDERMAX**®



**Project**\_\_Centre de G rontologie CH de salon de Provence  
**Country**\_\_France  
**Design**\_\_BBG Architectes, LA VALETTE DU VAR

**Decor No.**\_\_Individualdecor





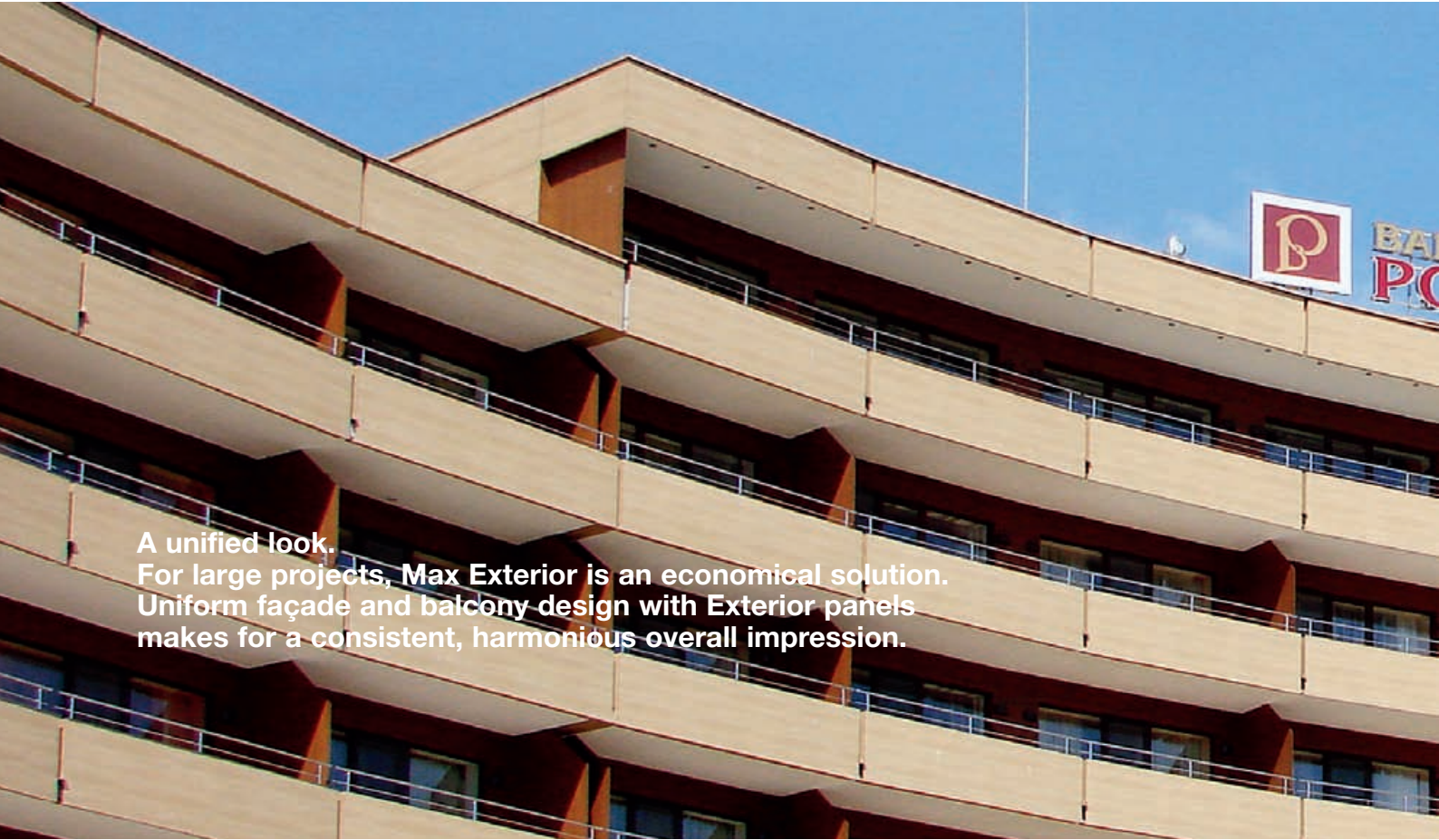
# Balconies

Project \_Balneohotel Pomorie

Country \_Bulgaria

Design \_d-r arch. Vassil Makrelöv

Decor No.\_0125 NT Natural Oak



A unified look.  
For large projects, Max Exterior is an economical solution.  
Uniform façade and balcony design with Exterior panels  
makes for a consistent, harmonious overall impression.







- a high degree of rigidity makes possible economical, large intervals between balcony fastenings
- structural advantages for balconies thanks to low weight of balcony railing claddings
- high-quality appearance via good selection of appropriate decors

exterior

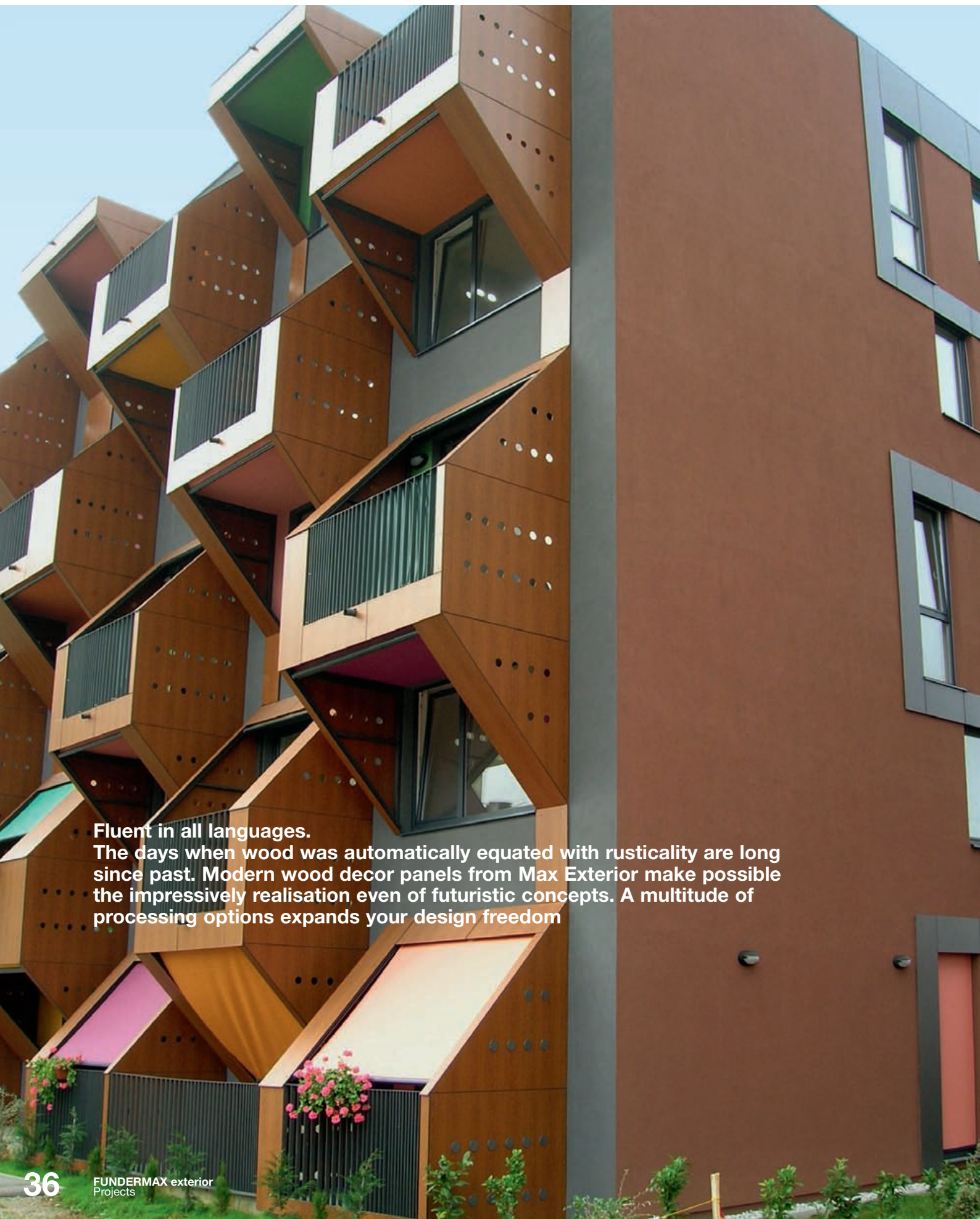


# Balconies

**Project** \_Residential building Livade, Izola

**Country** \_Slovenia

**Design** \_Ofis Arhitekti d.o.o., Ljubljana



**Fluent in all languages.**

The days when wood was automatically equated with rusticality are long since past. Modern wood decor panels from Max Exterior make possible the impressively realisation even of futuristic concepts. A multitude of processing options expands your design freedom





- functional privacy and wind protection with sophisticated design
- orientation system possible via the use of different panel colours
- high quality of prefabricated parts thanks to CNC processing

exterior

# Balconies

**Project** \_Residential building Neuwoba

**Country** \_Germany

**Design** \_Impla Bau, Neubrandenburg

**Decor No.** \_\_0630 NT Sea Green, 0692 NT Old Pink



**1001 variants.**

Let your imagination run wild when designing balconies with Max Exterior. Be it full-surfaced, colour-coordinated balcony balustrades, or lightness with holes: the myriad technical possibilities and varied panel designs give you additional latitude for creativity

\_building structuring via  
colour-differentiation of  
individual sections  
\_finely graded range of  
colours makes possible  
subtly nuanced combinations  
\_large panel formats make  
for economical fastening  
intervals

exterior



**Project**\_\_Residential complex Troststrasse Gesiba, 1100 Wien

**Country**\_\_Austria

**Design**\_\_Ganahl - Ifsits - Larch Architekten, Wien

**Decor No.**\_\_0160 NT Dark Afro

**FUNDERMAX**®





# Balconies

**Project** \_Balconies WHA Neue Heimat, Guntramsdorf

**Country** \_Austria

**Design** \_Architekt Göbl, Krems

**Decor No.** \_0717 NT Atlantic



**Project** \_Terraced house Opus VII, Oberursel/Taunus

**Country** \_Germany

**Design** \_Bien-Zenker AG/Wohnbau

**Decor No.** \_0328 NT Brushed Aluminium





**Project** \_Residential complex, Ruzickagasse, 1230 Wien  
**Country** \_Austria  
**Design** \_Gemeinnützige Bau- und Wohngenossenschaft „Wien-Süd“

**Decor No.** \_0074 NT Pastel Grey,  
0712 NT Steel Blue, 0661 NT Terracotta,  
0736 NT Saffron

**FUNDERMAX**®



**Good mood.**

A raucous red? A cheerful yellow? A mysterious blue? A subtle grey?  
Or everything all at once? When you design balconies and facades with  
Max Exterior, you can choose from around 100 decors or have additional  
individual decors made according to your wishes. A good way to bring  
new cheer to an older building

- \_ large balcony claddings are  
livened up by small panels
- \_ reassuring safety thanks to  
extreme break-resistance
- \_ colours on the outside and  
a neutral white on the inside  
upon request

exterior

# Balconies

**Project** \_\_Provincial retirement home, Kapfenberg

**Country** \_\_Austria

**Design** \_\_Architekt Wallner, Kapfenberg

**Decor No.** \_\_0647 NT Golden Yellow, 0717 NT Atlantic



**Today, tomorrow and beyond.**

**If you want to be pleased at the brilliance of your colours even after many years have gone by, then Max Exterior is the best choice.**

**Excellent surface characteristics ensure that the panels retain their intense colouration even when constantly exposed to sunlight.**

- economical installation thanks to large formats
- wide range of colours and materials lend buildings individual character
- proven materials ensure decades of durability

exterior



**Project** \_ Zero energy building Kammelmweg/Bauträger GmbH-Fa. Mischek  
**Country** \_ Austria  
**Design** \_ Architekt Johannes Kaufmann

**Decor No.** \_ 0059 NT Dark Green  
0674 NT Mars Red

**FUNDERMAX**®



# Entrances

**Project**\_\_Supermarket SPAR, Hartkirchen

**Country**\_\_Austria

**Design**\_\_Architekten Domeinig Meisinger, Puchenu

**Decor No.**\_\_0075 NT Dark Grey







### Quality inside and out.

The design of a business entrance sends an important signal to customers. With Max Exterior, you can set the stage for your brand's identity in an ideal manner. Because quality on the outside is an indication of quality on the inside.

- scratch and impact resistance for stress-prone areas
- easy cleaning assures long-lasting storefront attractiveness
- simple realisation of sculptural architecture

exterior



# Fascia/Soffit

**Project** \_\_ Swiss Quarter, Goerzallee, Berlin

**Country** \_\_ Germany

**Design** \_\_ Riccius + Winter Freie Architekten BDA, Berlin

**Decor No.** \_\_ 0161 NT Light Afro

## Versatile virtuosity.

Max Exterior is so universally employable that making a high-quality impression even in those typical difficult-to-design areas is a snap. Via the simple cladding of roof overhangs, for example, which creates a flowing transition between interior and exterior space.





# Soffit

**Project** \_\_Provincial retirement home, Raabs/Thaya

**Country** \_\_Austria

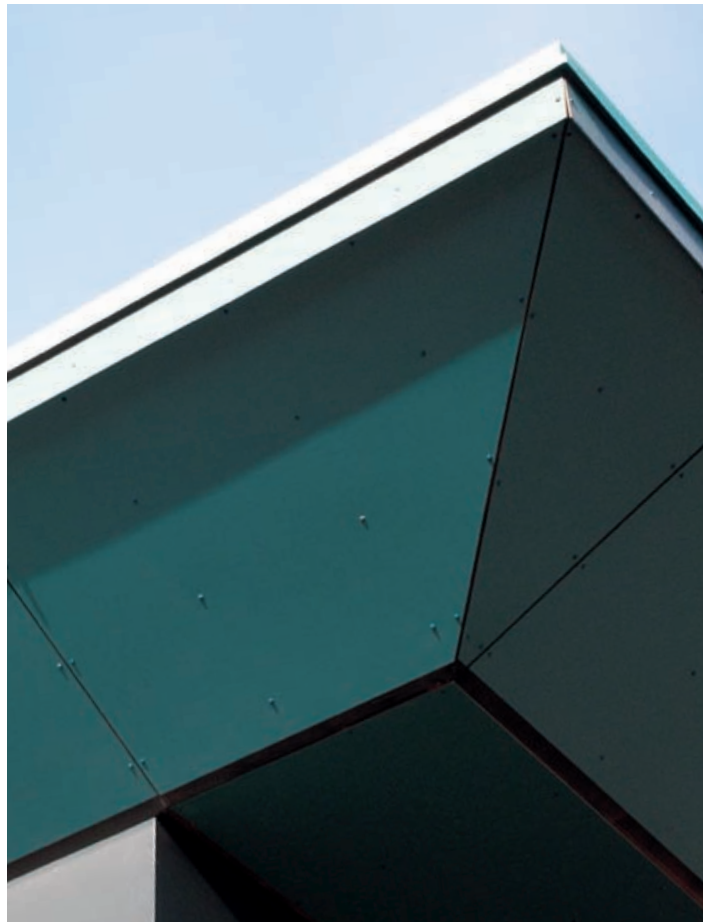
**Design** \_\_Architekt Zobl, Architekt Edelmüller

**Decor No.** \_\_0617 NT Green Petrol



— long-term maintenance-free weather protection in hard-to-reach areas  
— easy processing makes possible complex custom solutions  
— achieve unusual surface effects with special panel types

exterior





**All-round protection.**  
High weather resistance makes Max Exterior panels particularly well-suited to projects with extreme requirements. Special accents can be provided by panels in the Authentic decor, in which the compact panels are produced specifically without any decor, allowing them to acquire a natural appearance over time – while of course remaining resistant to wind and weather for decades to come.

# Balconies/Partitions

**Project** \_\_ Passion Eight, Kelkheim/Taunus

**Country** \_\_ Germany

**Design** \_\_ Bien-Zenker AG/Wohnbau

**Decor No.** \_\_ 0272 NT Summerapple, 0160 NT Dark Afro



**Idyllic multifunctionality.**

Balconies mean quality of life. And here, as well, there are lots of ways to use Max Exterior panels. Façades, balcony claddings, separating walls – everything made of one and the same material.

— lean look despite extreme robustness

— contrast-rich material combinations

exterior



**Project** \_Residential complex ÖSW Österr. Siedlungswerk, 1220 Wien  
**Country** \_Austria  
**Design** \_Hagmüller Architekten

**Decor No.** \_\_0159 NT Afro Black

**FUNDERMAX**®





# Sun Protection

**Project** \_Neues Leben und Migra, Monte Laa, 1100 Wien

**Country** \_Austria

**Design** \_Architekt Prof. DI Ernst Hoffmann ZT G.m.b.H, Wien

**Decor No.** \_\_0074 NT Pastel Grey



**Sun protection with a twist.**

**We're happy to see the sun shine. But particularly at the height of summer, sunlight does have its drawbacks.**

**With Max Exterior, you'll find exciting ways to achieve the functionality you need.**





- \_ high rigidity facilitates high transparency
- \_ simple realisation of previously difficult-to-achieve effects
- \_ light construction appearance thanks to large intervals between fastenings

exterior



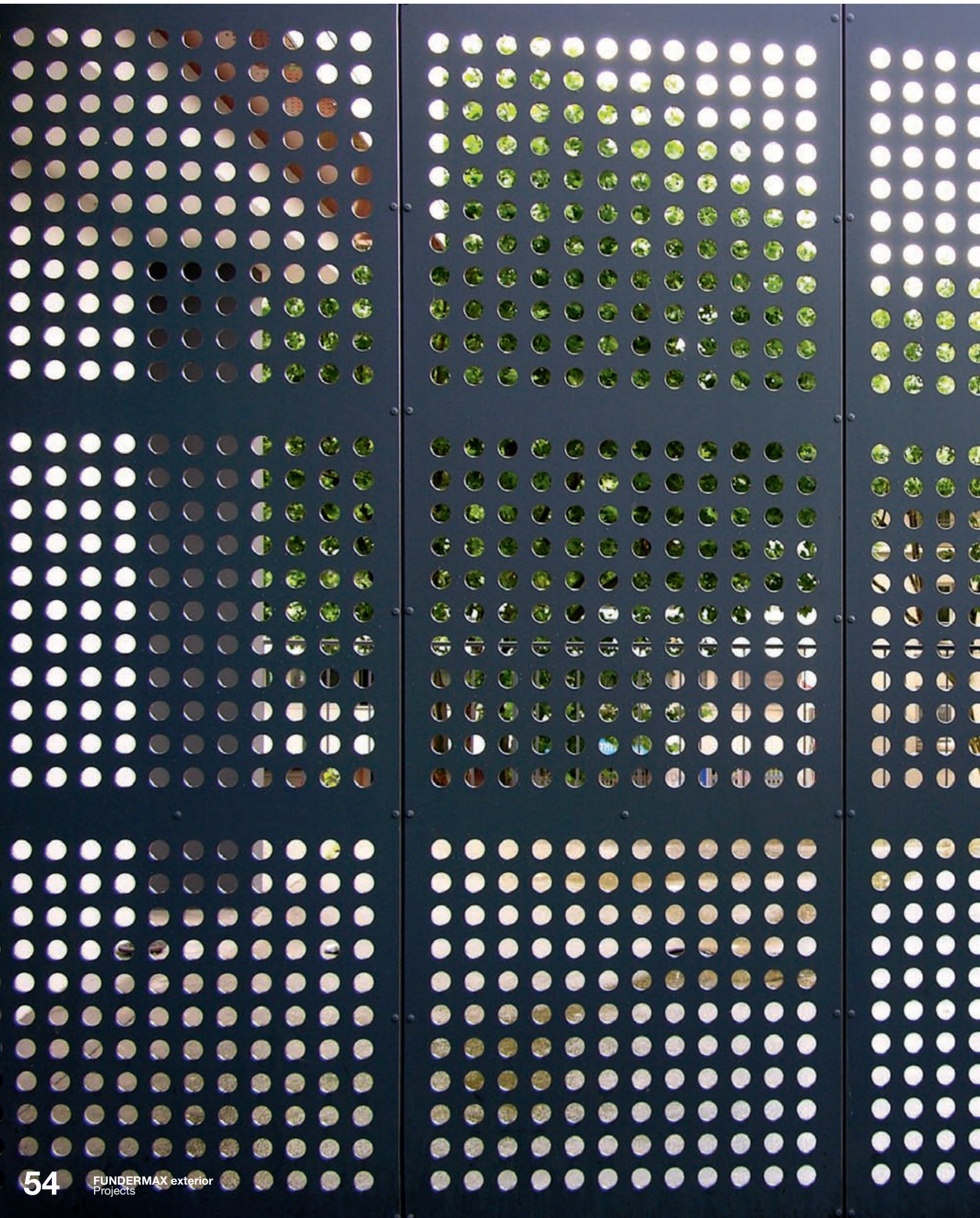
# Railings

Project Résidence Bd de Verdun ISSY LES MOULINEAUX

Country France

Design Cbt BRELAN D'ARCH à BAGNEUX

Decor No. 0330 NT Brushed Navy







Transparent but stable.  
Looking for light permeability and optical lightness? No problem. Thanks to compressed aluminium layers, Max Exterior Alucompact panels retain their stability and break-resistance even when they're finished with large holes.

- high degree of pre-fabrication ensures perfect finishing
- material rigidity thanks to aluminium bands makes possible large numbers of holes
- double-hardened surface guarantees lasting attractiveness

exterior



# Lettering

**Project** \_Swiss Quarter, Goerzallee, Berlin

**Country** \_Germany

**Design** \_Riccius + Winter Freie Architekten BDA, Berlin

**Decor No.** \_\_0161 NT Light Afro



**Project** \_Supermarket SPAR Traboch

**Country** \_Austria

**Design** \_Architekt DI Heinz Malek

**Decor No.** \_\_0159 NT Afro Black







Logo.  
 Words, names, symbols, logos,  
 geometric patterns. CNC processing  
 and individual decors allow the  
 realisation of practically any idea with  
 Max Exterior panels





# Transportation

Project \_TRAM WAY de CLERMONT FERRAND

Country \_France

Design \_Architecte J. Dulieu à Nantes JC Decaux - Aubrilam

Decor No.\_1260 NT Parakan Teak







### Many faces.

Urban design shapes a landscape. Transportation facilities serve many different purposes, and for just this reason they need to be resistant to mechanical influences, impervious to vandalism and easy to clean. An ideal situation in which to employ Max Exterior.

- \_high impact-resistance thanks to homogenous core
- \_high scratch-resistance – ideal for high-traffic environments
- \_long-lasting resistance to the effects of sun and rain

exterior



# Utilitarian Structures

**Project** \_Sonnengut building project, Zufikon

**Country** \_Switzerland

**Design** \_Architekt Giandavide Moccetti, Zürich

**Decor No.** \_0747 NT Medium Grey



**Heavy-duty.**

Above all, utilitarian structures have to do one thing: take a lot of abuse. For this reason, the surface of Max Exterior panels is scratch-resistant and easy to clean. Normal paint remover is all you need – and that graffiti is a thing of the past.

**Project** \_Residential building, Ljubljana

**Country** \_Slovenia

**Design** \_Robert Klun udia und Maja Zitnik udia

**Decor No.** \_0074 NT Pastel Grey





**Project**\_\_ WHA GEWOG, Waidhofen/Ypps  
**Country**\_\_ Austria  
**Design**\_\_ GEWOG Neue Heimat

**Decor No.**\_\_ 0661 NT Terracotta

**FUNDERMAX**®



**Project**\_\_ Bicycle shed WHA Fortschritt, Welzenegg  
**Country**\_\_ Austria  
**Design**\_\_ Architekt Klimbacher, Klagenfurt

**Decor No.**\_\_ 0085 NT White





# Outdoors

**Project** \_ Fence Elements, Mödling  
**Country** \_ Austria

**Decor No.** \_\_0074 NT Pastel Grey



**Project** \_ Spicher tables, Brugg  
**Country** \_ Switzerland  
**Design** \_ M. Spicher Schreinerei

**Decor No.** \_\_0703 NT Dove Blue







### Irresistible.

An independent, clear formal language can play an important role in attracting guests, particularly in urban areas. The easy workability and large diversity of decors in Max Exterior panels provides designers and planners with new opportunities to realise aesthetically sophisticated solutions.



- lean, airy look with high impact and break resistance
- easy cleaning, even in exceptionally high-use applications



# Playground

**Project** \_Ecole Foucault, Clichy  
**Country** \_France  
**Design** \_Mme PIRES, Ville de Clichy

**Decor No.** \_0674 NT Mars Red, 0687 NT Maize,  
0663 NT Reseda Green, 0712 NT Steel Blue

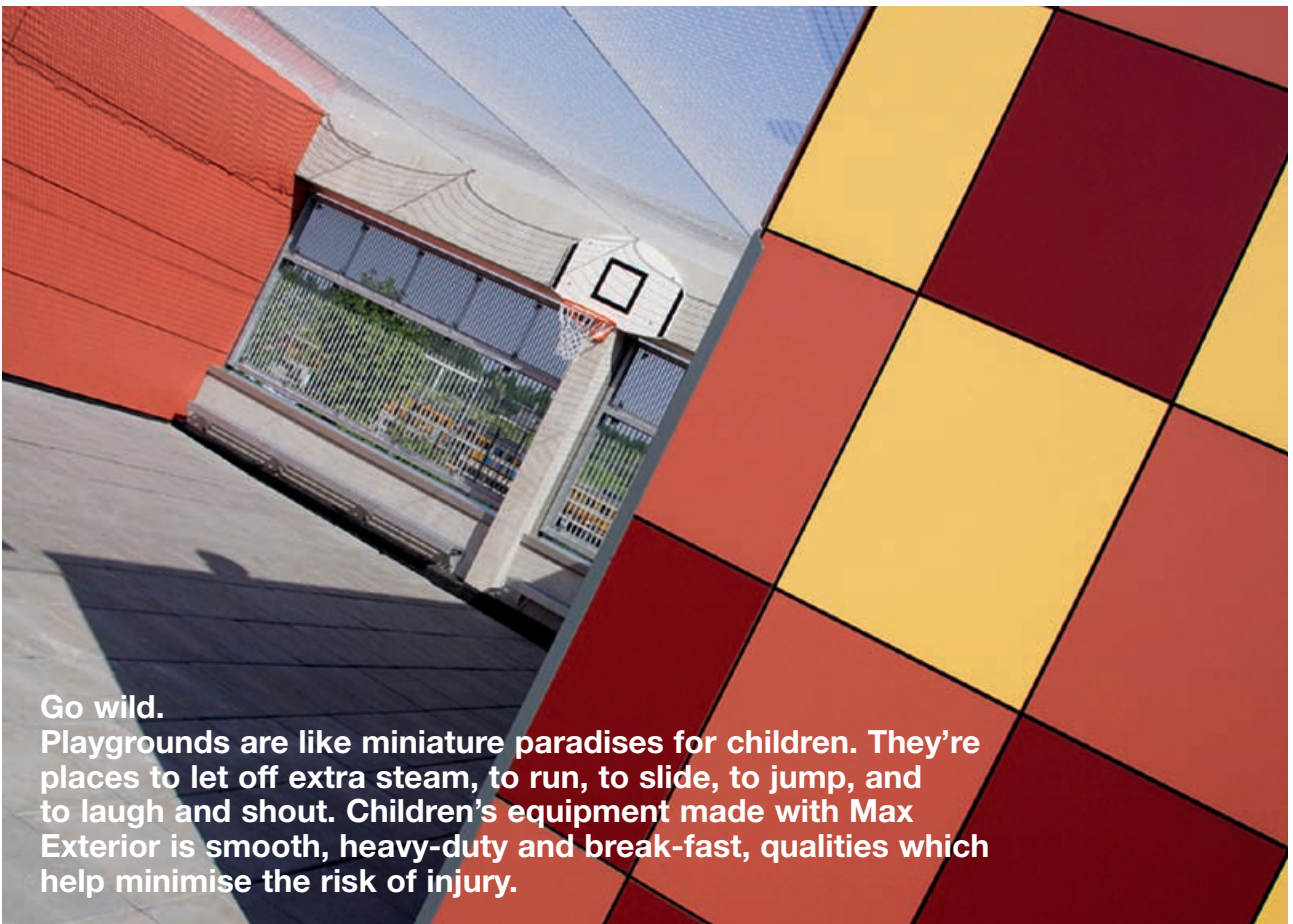


**Project** \_Kindergarden, Gugging  
**Country** \_Austria

**Decor No.** \_0647 NT Golden Yellow, 0736 NT Saffron,  
0717 NT Atlantic, 0591 NT Fir Green







**Go wild.**  
Playgrounds are like miniature paradises for children. They're places to let off extra steam, to run, to slide, to jump, and to laugh and shout. Children's equipment made with Max Exterior is smooth, heavy-duty and break-fast, qualities which help minimise the risk of injury.



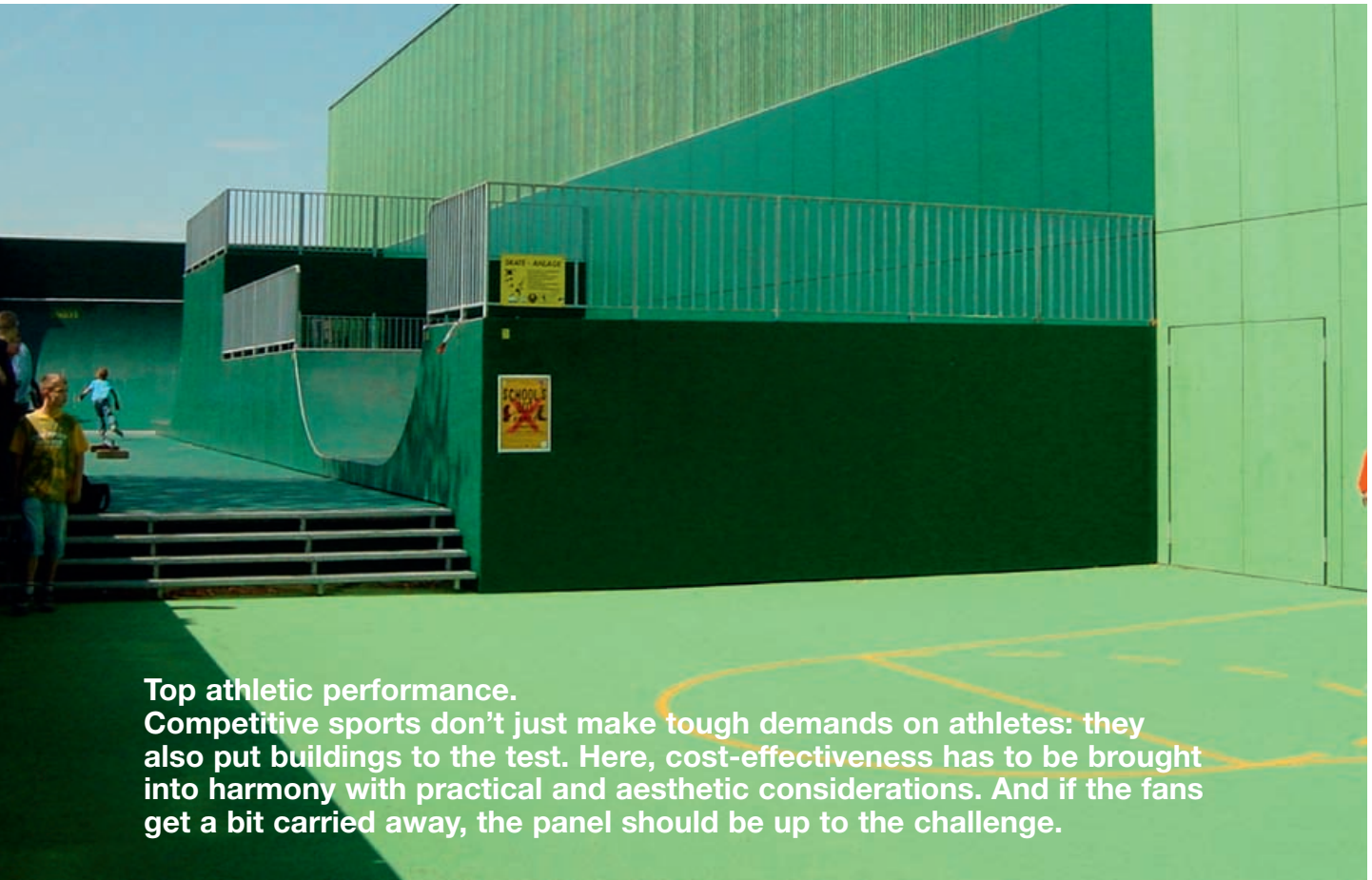
# Sports Facilities

**Project** Halfpipe, Tübingen

**Country** Germany

**Design** Allmann Sattler Wappner, Architekten BDA, München

**Decor No.** 0059 NT Dark Green





**Project**\_\_Intersport Arena, Linz  
**Country**\_\_Austria  
**Design**\_\_Architekt Hinterwirth, Gmunden

**Decor No.**\_\_0777 NT Coral

**FUNDERMAX**®



**Project**\_\_Vector Arena, Auckland City  
**Country**\_\_New Zealand  
**Design**\_\_Crawford Architects, USA

**Decor No.**\_\_0075 NT Dark Grey, 0160 NT Dark Afro, 0161 NT Light Afro





MAX COMPACT France  
3 Cours Albert Thomas  
F-69003 LYON  
Tel.: +33 (0) 4 78 68 28 31  
Fax: +33 (0) 4 78 85 18 56  
infofrance@fundermax.at  
www.fundermax.at

JAGO AG  
Industriestrasse 21  
CH-5314 Kleindöttingen  
Tel.: +41 (0) 56-268 81 31  
Fax: +41 (0) 56-268 81 51  
info@jago.ch  
www.jago.ch

TEINSER S. A.  
Poligono Industrial Can Salvatella  
Avda. Salvatella n° 85-97, Aptdo. 18  
E-08210 Barberá del Vallés  
Tel.: +34-93-729 75 50  
Fax: +34-93-729 49 22  
info@teinser.com  
www.teinser.com

ISO-MAX Spółka Akcyjna  
ul. Rybitwy 12  
PL-30722 Krakau  
Tel.: +48-12-65 34 528  
Fax: +48-12-65 70 545  
biuro@iso-max.com.pl  
www.iso-max.com.pl



FunderMax GmbH  
Klagenfurter Straße 87-89  
A-9300 St. Veit / Glan

Tel.: +43 (0) 5/9494-0  
Fax: +43 (0) 5/9494-4200  
office@fundermax.at  
www.fundermax.at

A Company of the *Constantia* INDUSTRIES AG